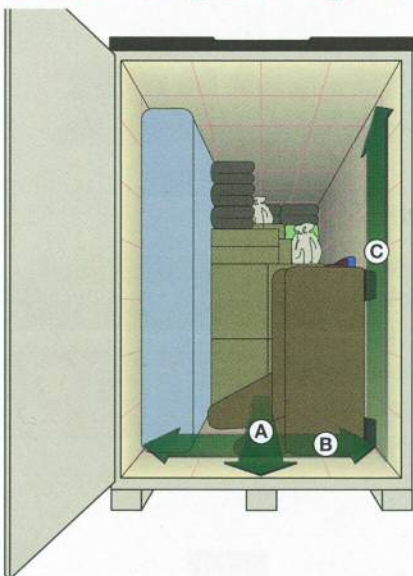


Helpful U-Box® Tips Make Moving & Storage Easier!



1. Load your U-Box in tiers. A tier is created by building a single row of items and stacking them to the ceiling.
2. Create a row at the back of the U-Box (A), then fill it in from one side to the other (B), stacking items from the floor to the ceiling (C).
3. With the heaviest items on the bottom (from side to side) build upward toward the ceiling. Extremely heavy items, such as toolboxes, safes and refrigerators, should be loaded in the center of the U-Box (if possible, lock wheels).
4. Keep your tiers packed as tight as possible. Fill any empty space with smaller items or U-Haul® Furniture pads to prevent load from shifting.
5. Lightweight and fragile items should be loaded at the top.
6. Utilize space in cabinets, bookshelves and entertainment centers.
7. If your U-Box will not be completely full, disperse weight by building shorter tiers that evenly distribute weight in the U-Box.
8. Secure Appliances with tie downs.

Pictures and Mirrors

1. Wrap mirrors in U-Haul Picture Boxes and then wrap with U-Haul furniture pads. Place between mattresses and box springs. Do the same for glass table tops.
2. Load pictures and mirrors on not flat.

Furniture

1. Disassemble when possible so you can use all available space. Cover all furniture with furniture pads and secure with tie downs.
2. Chairs should be stacked chair to seat, wrapped with furniture pads and secured with tie-downs. Do not stack items on top of chair legs.
3. TVs must be wrapped in furniture pads and then placed in a U-Haul TV Box or covered with a large piece of cardboard. The screen side should be placed against a flat cushioned surface.
4. Smaller mattresses wrapped in U-Haul mattress bags should be loaded last and used to tie off the load. This will prevent the load from shifting towards the door of the U-Box.
5. Sofas and loveseats should be stacked on end to maximize space.

WARNING: The U-Box is designed to hold 2,000 pounds. Do not overload or place loose furniture without furniture pads or tie downs.



FAQ:

▼ What is the Rental Period?

U-Boxes are month-to-month. Trailers are daily.

▼ What About Access to my Stored Possessions?

Access is not limited, however, if you require daily or weekly access to your possessions, a traditional U-Haul self-storage room is a better solution for you.

▼ What About Protection & Security?

U-Boxes protect against moisture that can result in mold and mildew.

- Secure your U-Box with **your** lock prior to pickup.
- Our warehouse is alarmed and centrally monitored.

▼ Is There a Weight Limit?

Yes. The U-Box can hold up to 2,000 lbs.

▼ Do I Need Insurance?

Yes. U-Box provides low-cost insurance options. Without insurance, you do not have coverage for loss or damage.

Reserve your U-Box® today

ubox.com

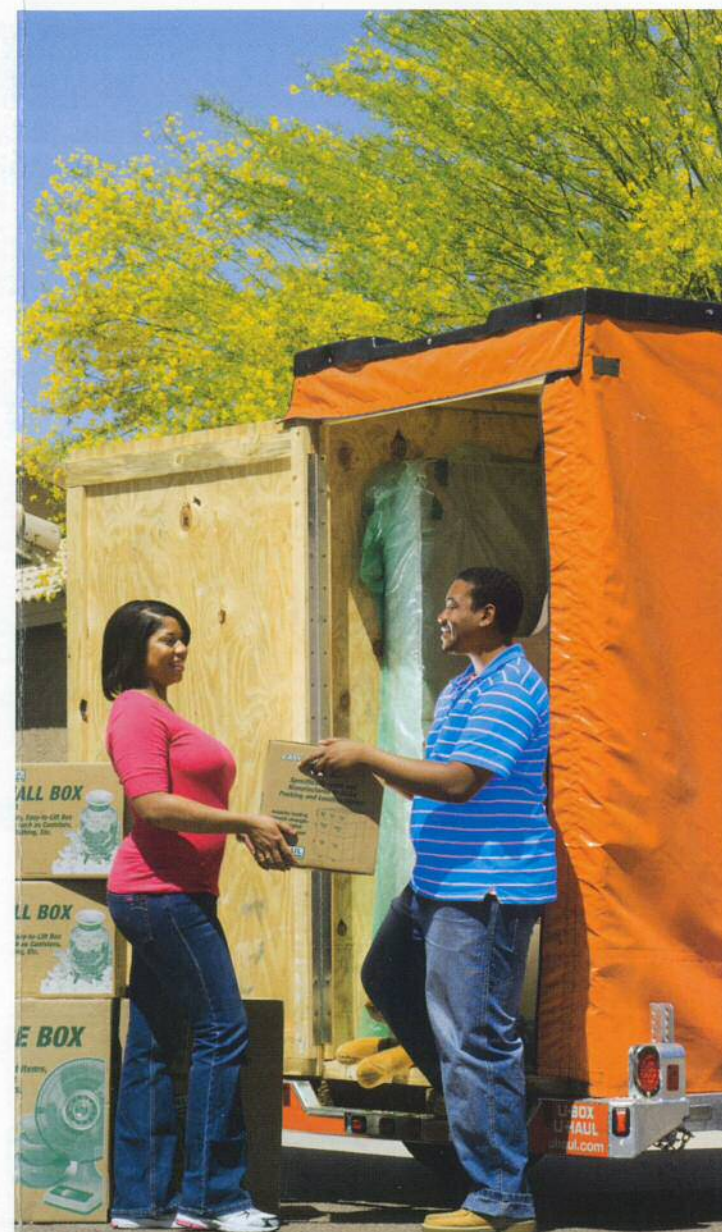
1-877-GO-U-HAUL®



U-HAUL® At Your Door

U-BOX®

U-LOAD • U-STORE • U-SHIP
Anywhere!








Reservations at
ubox.com

Additional
Information
Inside



U-BOX® IS MOVING AND PORTABLE STORAGE

Select How Many U-Boxes You Need:

WHAT ARE YOU MOVING OR STORING?	Month-To-Month Rentals... Picked up by you or "Delivered To Your Door!"
Miscellaneous Storage Up to 1½ Rooms	 257 cu. ft.
Studio or 1 Bedroom Home (Up to 1,200 Sq. Ft.)	 2 U-Boxes
Up to 2 Bedroom Home (1,200-1,600 Sq. Ft.)	 3 U-Boxes
3 Bedroom Home (1,600-2,000 Sq. Ft.)	 4 U-Boxes
4 Bedroom Home or Larger (2,000 Sq. Ft. & above)	 5 U-Boxes

Select your Delivery/Drop off Option:

1. DO-IT-YOURSELF OPTION

Save Your time and money by loading/unloading at U-Haul
Load or unload on your own schedule.



2. DO-IT-YOURSELF OPTION

Pick up immediately with a U-Box trailer

Fill your U-Boxes and bring them back to us for storage or shipping.



3. DELIVERED TO YOU

Need more than one?

We can deliver with our custom designed flat-bed truck.



4. DELIVERED TO YOU

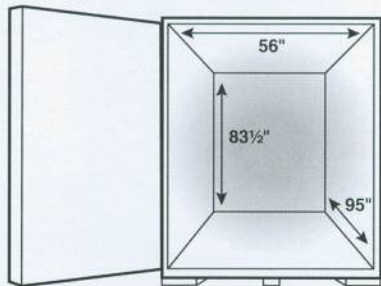
Conveniently load U-Box while trailer is hooked up to vehicle.
When complete call for pick up.

* Where Available

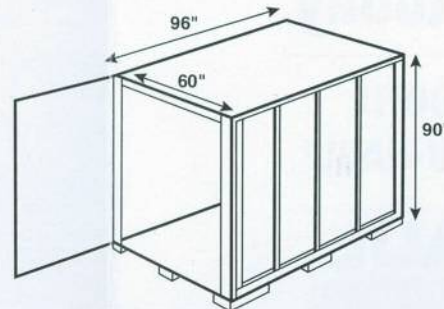


Everything You Have Fits

Interior Dimensions:



Exterior Dimensions:



Delivered to your destination on an AIR-RIDE TRUCK

U-BOX SHIPS ANYWHERE



NEED MOVING HELP? Get Moving Help® Today!

MovingHelp.com
SAFE • AFFORDABLE • RELIABLE



Find Local
Moving Labor
Services